

## 4. *outputs* – result examples

---

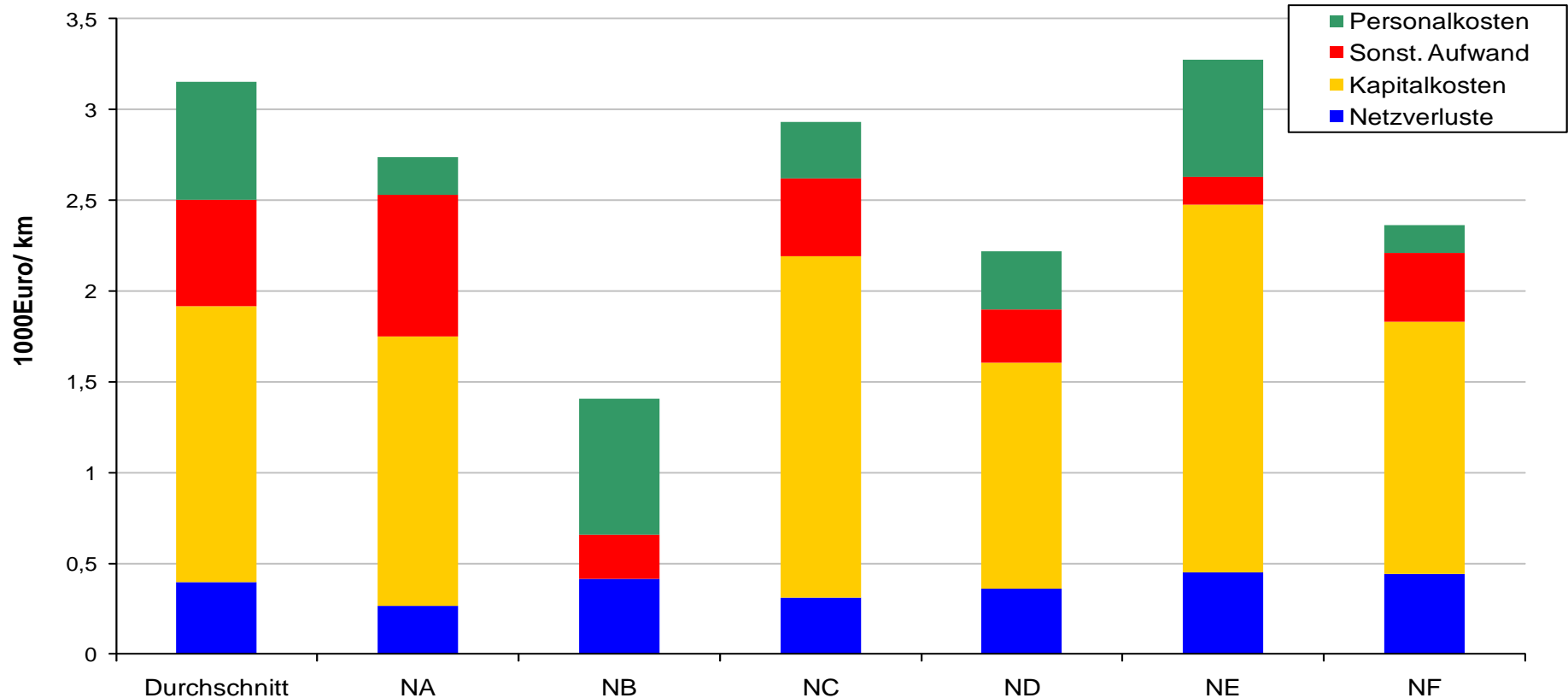
The result report consists of a power-point document per company.

It is designed to give full transparency for all calculations and assumptions and provide a practical basis for -

- business controlling
- internal and external analysis
- strategy development
- efficiency development
- regulatory evaluation

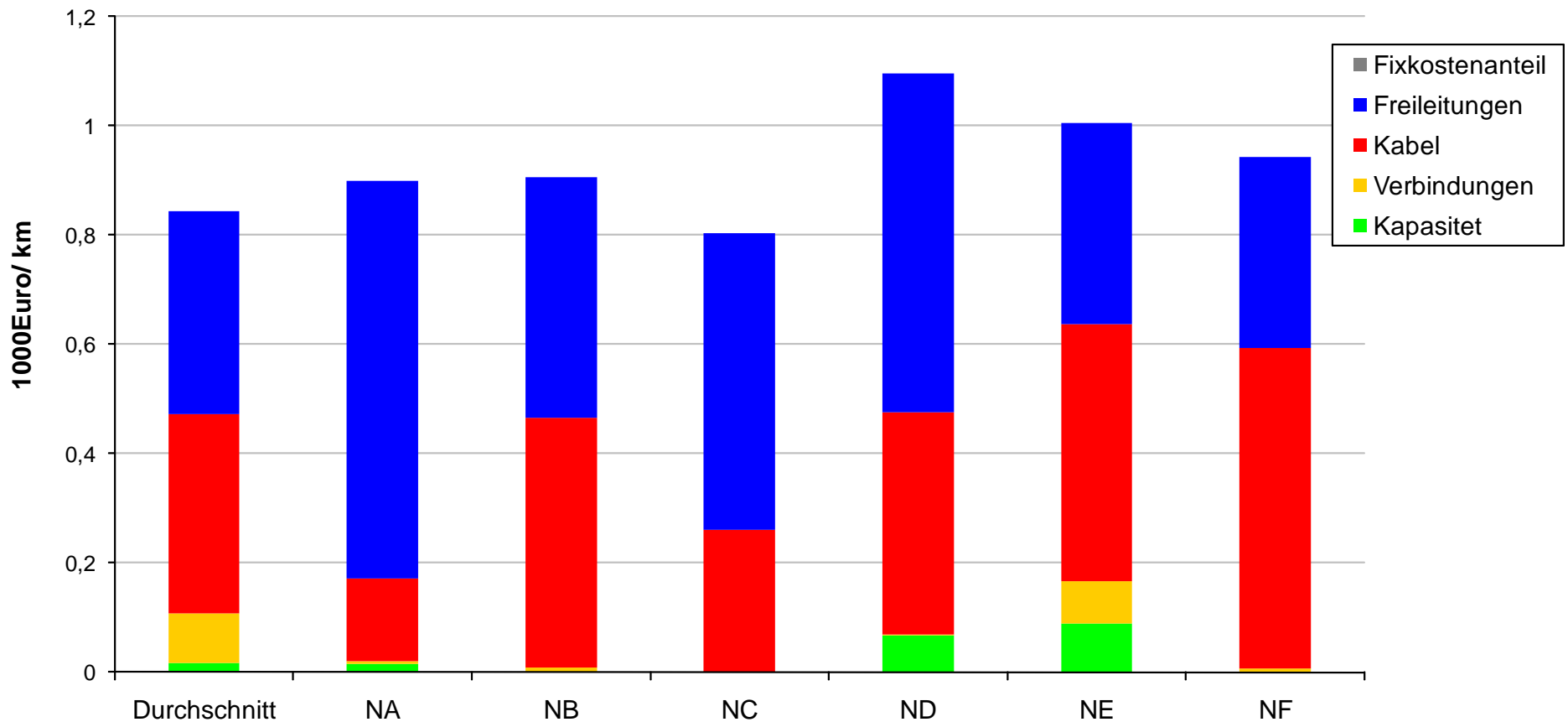
The report may be provided in English, German or Norwegian

## 4. outputs – Comparison of cost: 6 companies



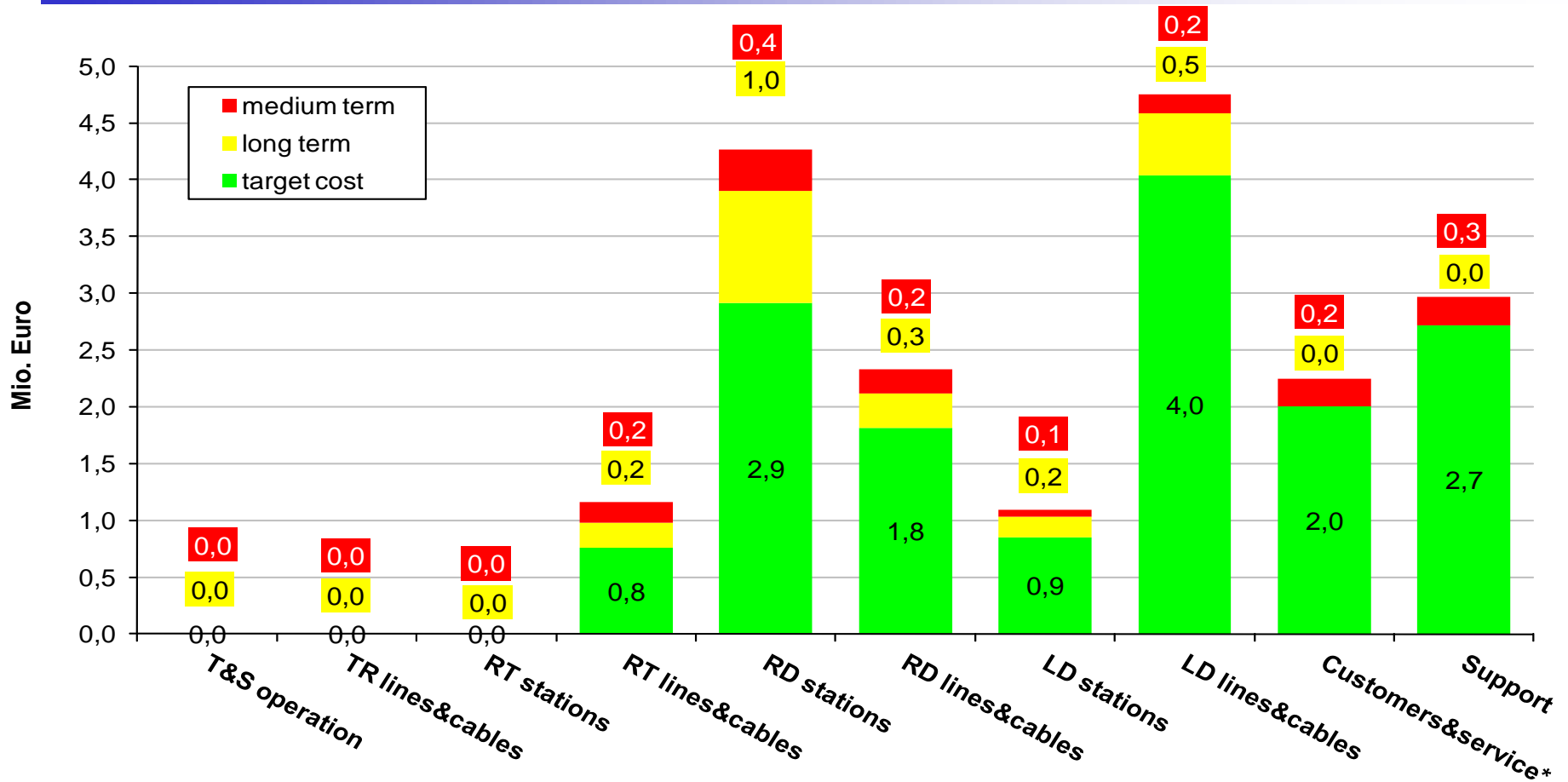
- do we get a good price from our service-providers?
- how is our cost level compared to peer group?
- are costs developing as planned?
- does our cost development deviate from peer group?

## 4. outputs – Comparison of task: 6 companies, o&m task



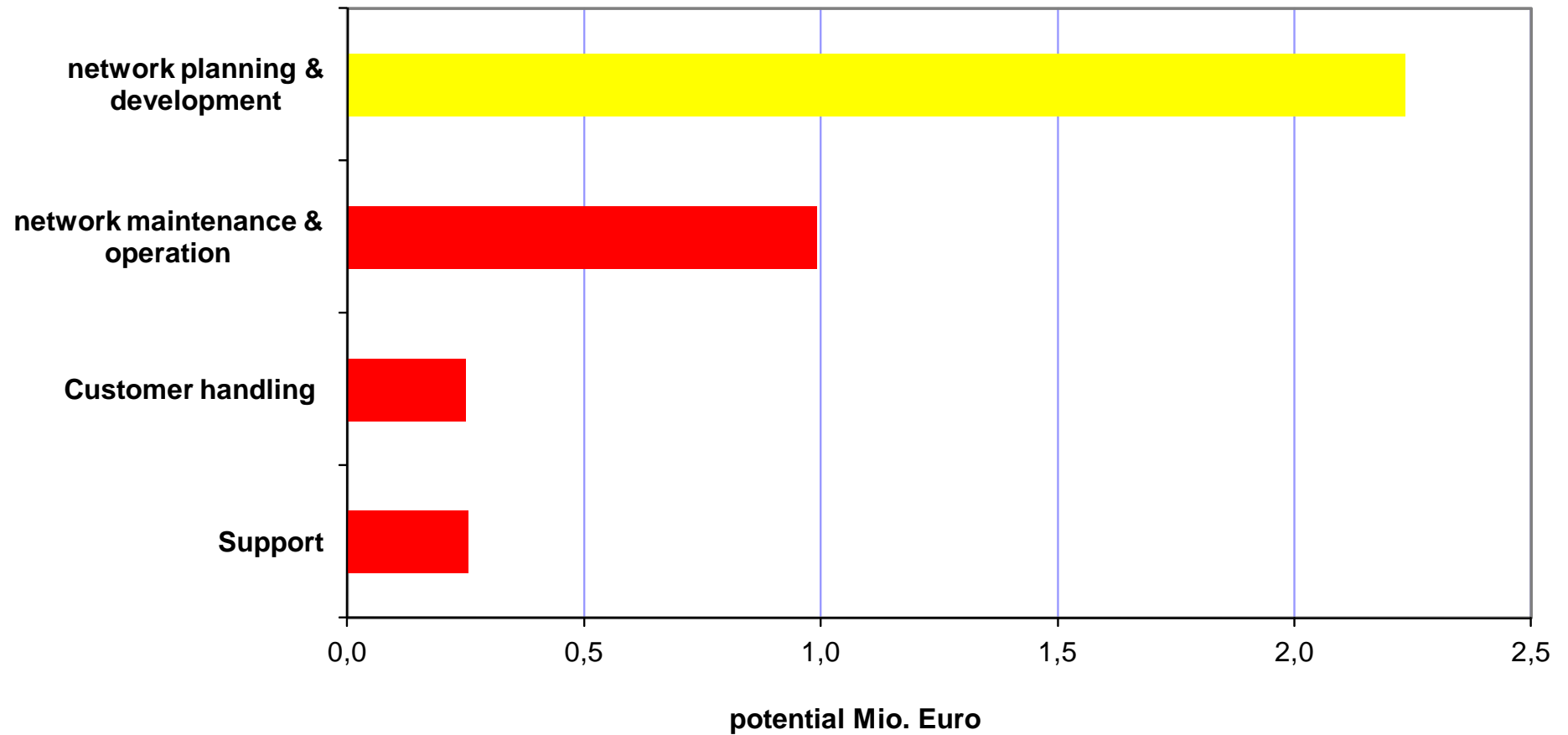
- which cost drivers are the most important?
- can the requirements of our owners be reconciled with the Regulator's price limits under the cost drivers in our area?

## 4. outputs – Evaluation of cost in relation to cost drivers



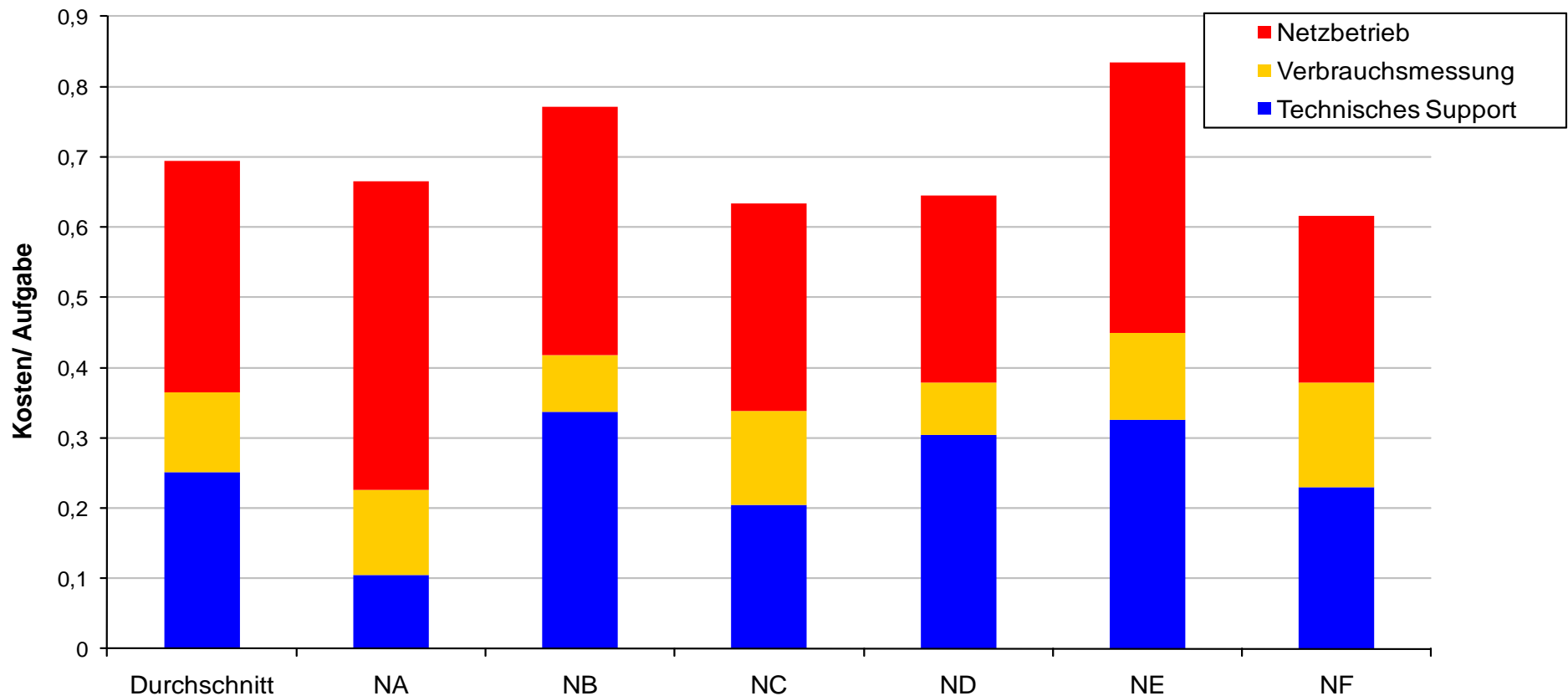
- in which activities is there a potential for cost reduction?
- which part of the potential may be realised in the mid term and which part requires structural changes?

## 4. outputs – Evaluation of improvement potentials:



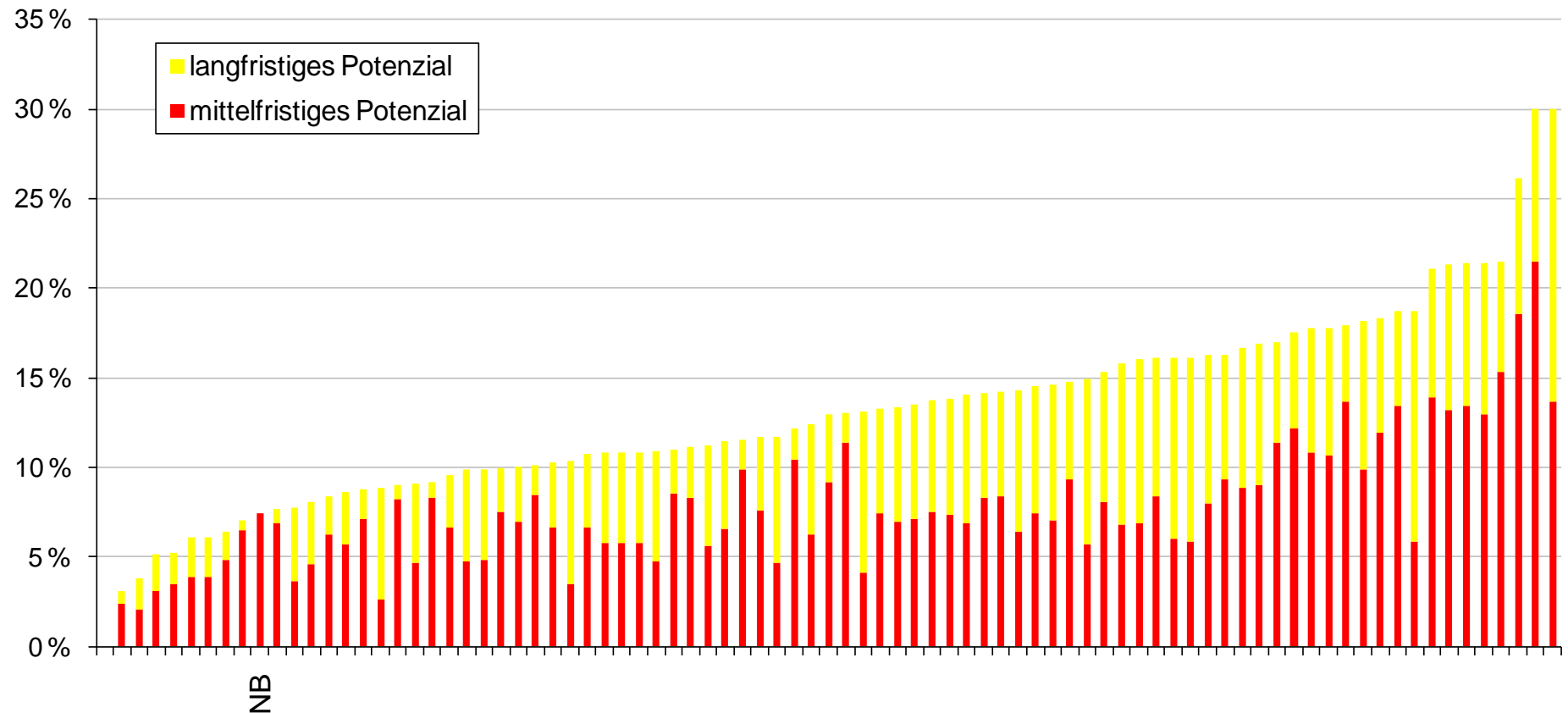
•in which functions is there a potential for cost reduction?

## 4. outputs – Comparison of cost and task per subfunction



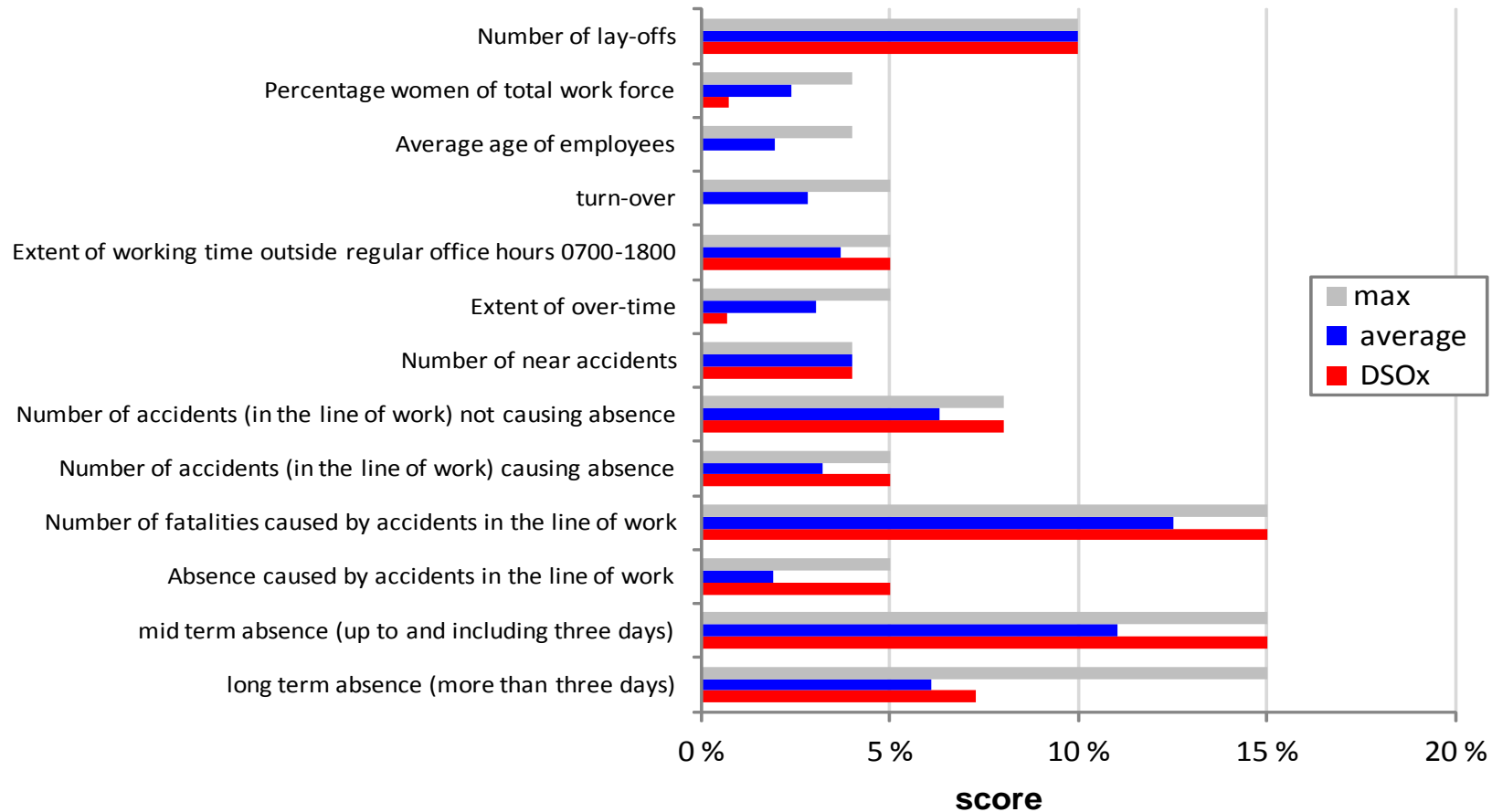
- which subfunctions are relatively costly
- where to look for best practice

## 4. outputs – Efficiency position in the reference group



- is the level of efficiency and its development over time satisfactory?
- is it in line with the Regulators assessment?
- how accurate is the evaluation, and what are the main uncertainties?

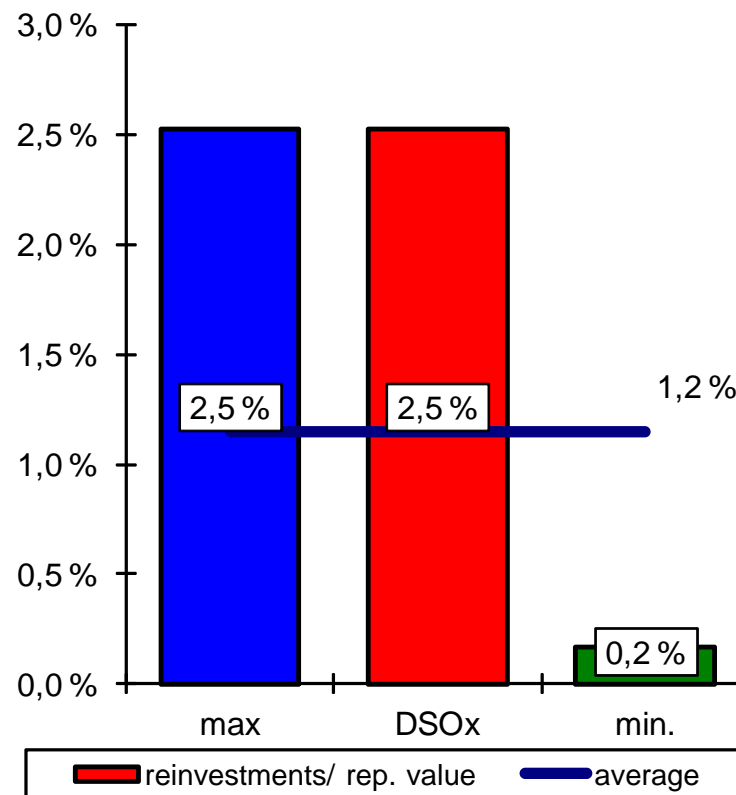
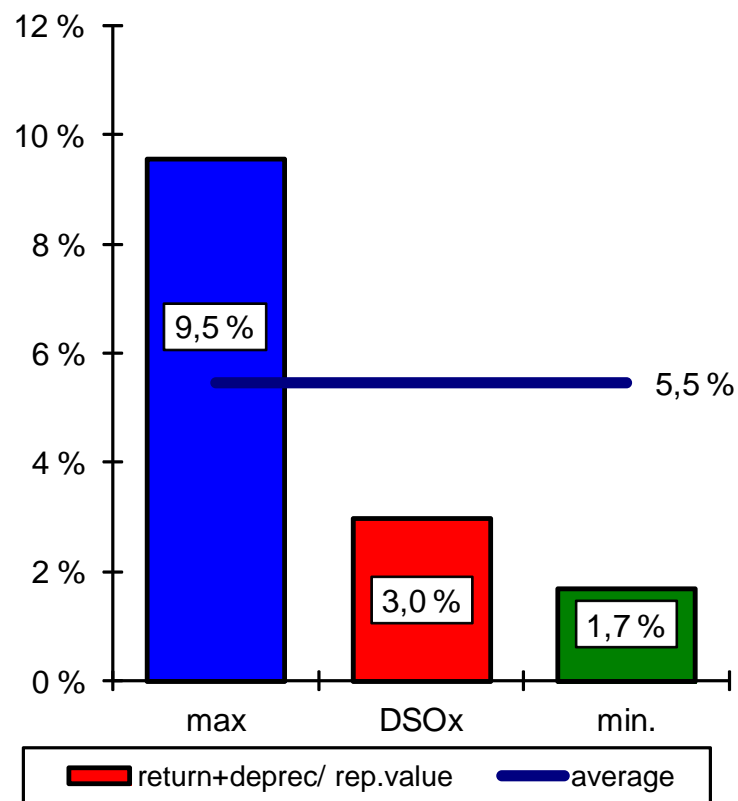
## 4. outputs – Comparison of working conditions/ customer satisfaction



- are working conditions generally satisfactory?
- which are the important differences compared to "competitors"?
- is the level of customer satisfaction satisfactory compared to "competitors"?



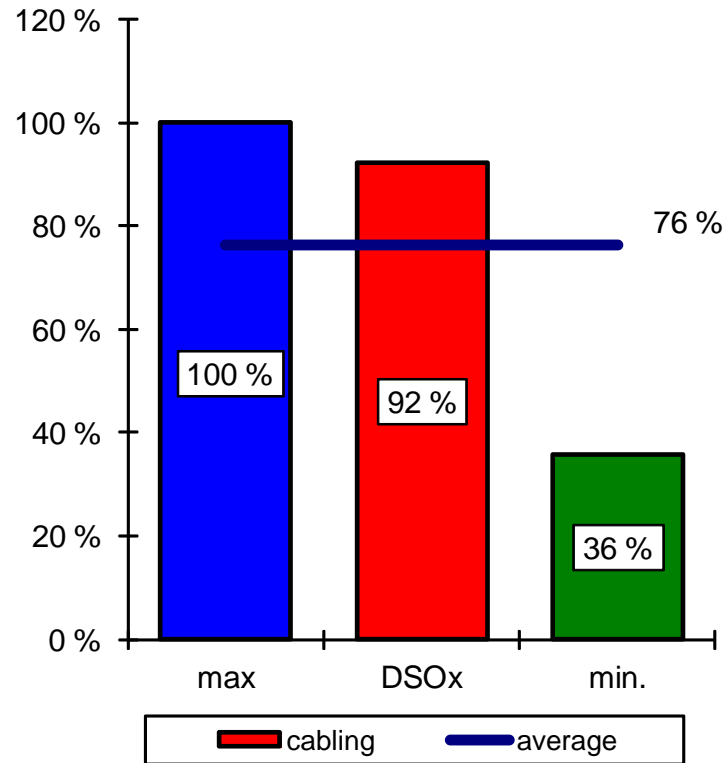
## 4. outputs – Evaluation of financial strength and sustainability :



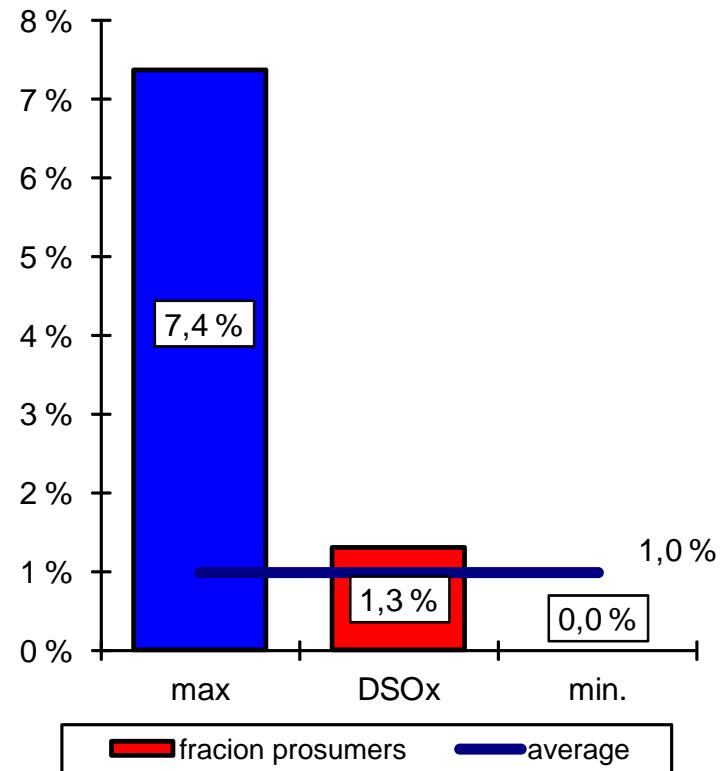
- is the cash flow satisfactory?
- is the level of reinvestment and component age satisfactory?
- do we see a sustainable relationship between efficiency, quality, customer satisfaction and working conditions?

## 4. outputs – Evaluation of environmental standard

Cable fraction



Prosumer fraction\*



\* ratio of combined producers / consumers to consumers

- what is the level of cabling and encapsulation compared to other DSOs
- which part of consumers are allowed to supply power to the grid